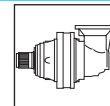


PG 160

	i	M _c [kNm]				n _{1max} [min ⁻¹]	Pt [kW]	Kg				
		n ₂ x h	n ₂ x h	n ₂ x h	n ₂ x h			M	P	CPC	F	FS
		10.000	20.000	50.000	100.000							
PG 161	3.55	1.92	1.70	1.45	1.28	2800	12	15	17	20	13	16
	4.28	1.92	1.70	1.45	1.28							
	5.60	1.37	1.21	1.03	0.91							
	6.75	1.13	1.00	0.85	0.75							
PG 162	12.6	1.92	1.70	1.45	1.28	2800	8	21	23	26	19	22
	15.2	1.92	1.70	1.45	1.28							
	19.9	1.92	1.70	1.45	1.28							
	23.9	1.92	1.70	1.45	1.28							
	28.9	1.92	1.70	1.45	1.28							
	31.4	1.37	1.21	1.03	0.91							
	37.8	1.37	1.21	1.03	0.91							
	45.5	1.13	1.00	0.85	0.75							
	58.5	1.13	1.00	0.85	0.75							
PG 163	54.1	1.92	1.70	1.45	1.28	2800	5	27	29	32	25	28
	65.3	1.92	1.70	1.45	1.28							
	70.7	1.92	1.70	1.45	1.28							
	78.7	1.92	1.70	1.45	1.28							
	85.3	1.92	1.70	1.45	1.28							
	102.8	1.92	1.70	1.45	1.28							
	111.5	1.92	1.70	1.45	1.28							
	134.3	1.92	1.70	1.45	1.28							
	161.9	1.92	1.70	1.45	1.28							
	172.5	1.92	1.70	1.45	1.28							
	207.9	1.92	1.70	1.45	1.28							
	211.6	1.37	1.21	1.03	0.91							
	255.1	1.37	1.21	1.03	0.91							
	271.7	1.37	1.21	1.03	0.91							
	307.5	1.13	1.00	0.85	0.75							
	327.5	1.37	1.21	1.03	0.91							
	394.8	1.13	1.00	0.85	0.75							
PG 164	337.3	1.92	1.70	1.45	1.28	2800	1.5	33	35	38	31	34
	365.7	1.92	1.70	1.45	1.28							
	396.4	1.92	1.70	1.45	1.28							
	440.8	1.92	1.70	1.45	1.28							
	477.8	1.92	1.70	1.45	1.28							
	531.3	1.92	1.70	1.45	1.28							
	575.9	1.92	1.70	1.45	1.28							
	624.4	1.92	1.70	1.45	1.28							
	694.2	1.92	1.70	1.45	1.28							
	752.6	1.92	1.70	1.45	1.28							
	836.8	1.92	1.70	1.45	1.28							
	907.1	1.92	1.70	1.45	1.28							
	966.3	1.92	1.70	1.45	1.28							
	1093.4	1.92	1.70	1.45	1.28							
	1144.5	1.92	1.70	1.45	1.28							
	1185.4	1.37	1.21	1.03	0.91							
	1318.0	1.92	1.70	1.45	1.28							
	1428.8	1.37	1.21	1.03	0.91							
	1692.3	1.92	1.70	1.45	1.28							
	3422.1	1.13	1.00	0.85	0.75							

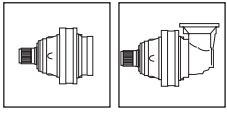
PG 160



	i	Mc [kNm]				n1max [min ⁻¹]	Pt [kW]	Kg				
		n ₂ x h	n ₂ x h	n ₂ x h	n ₂ x h			M	P	CPC	F	FS
		10.000	20.000	50.000	100.000							
PGA 162	10.4	1.92	1.70	1.45	1.28	2800	8	30	32	35	28	31
	12.5	1.92	1.70	1.45	1.28							
	16.4	1.37	1.21	1.03	0.91							
	19.7	1.13	1.00	0.85	0.75							
PGA 163	37.0	1.92	1.70	1.45	1.28	2800	5	36	38	41	34	37
	44.6	1.92	1.70	1.45	1.28							
	53.8	1.92	1.70	1.45	1.28							
	58.4	1.92	1.70	1.45	1.28							
	70.3	1.92	1.70	1.45	1.28							
	84.8	1.92	1.70	1.45	1.28							
	91.9	1.37	1.21	1.03	0.91							
	110.8	1.37	1.21	1.03	0.91							
	133.6	1.13	1.00	0.85	0.75							
	171.5	1.13	1.00	0.85	0.75							
PGA 164	131.8	1.92	1.70	1.45	1.28	2800	1.5	42	44	47	40	43
	158.9	1.92	1.70	1.45	1.28							
	191.5	1.92	1.70	1.45	1.28							
	207.6	1.92	1.70	1.45	1.28							
	230.8	1.92	1.70	1.45	1.28							
	301.7	1.92	1.70	1.45	1.28							
	327.0	1.92	1.70	1.45	1.28							
	363.6	1.92	1.70	1.45	1.28							
	394.2	1.92	1.70	1.45	1.28							
	475.1	1.92	1.70	1.45	1.28							
	515.3	1.37	1.21	1.03	0.91							
	572.7	1.92	1.70	1.45	1.28							
	610.1	1.92	1.70	1.45	1.28							
	735.4	1.92	1.70	1.45	1.28							
	797.2	1.37	1.21	1.03	0.91							
	960.9	1.37	1.21	1.03	0.91							
	1158.2	1.13	1.00	0.85	0.75							
	1233.7	1.37	1.21	1.03	0.91							
1487.1	1.13	1.00	0.85	0.75								

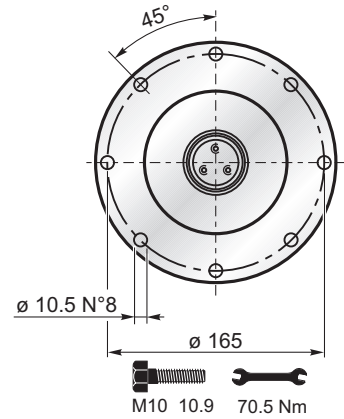
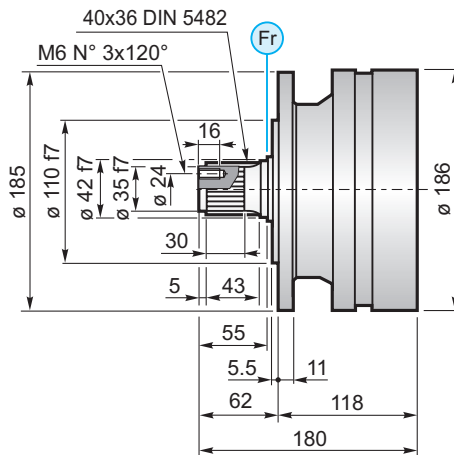
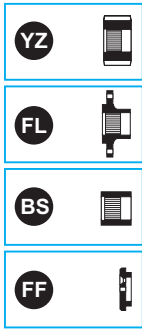


(n₂ x h = 20.000)
 $M_{max} = M_c \times 2$

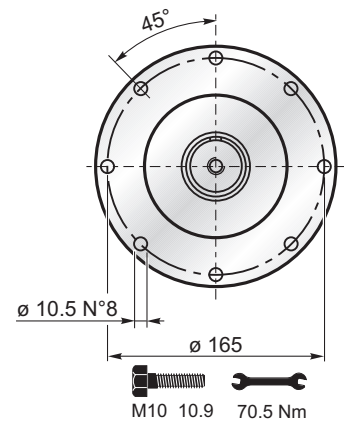
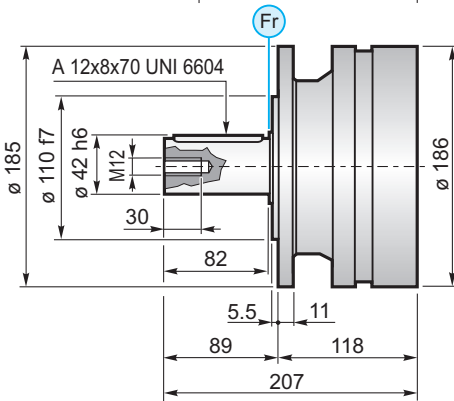


PG 160

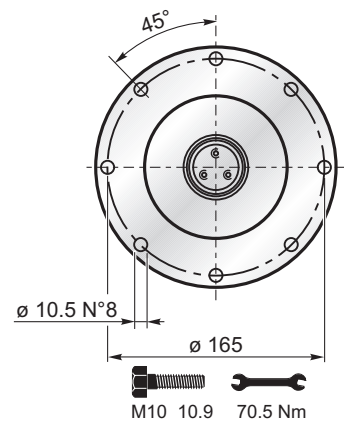
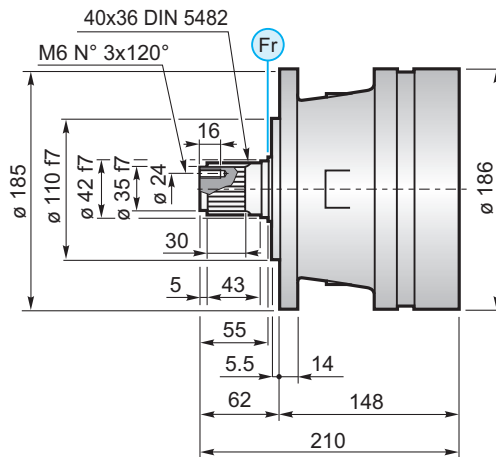
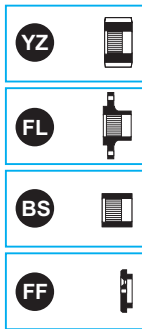
MS



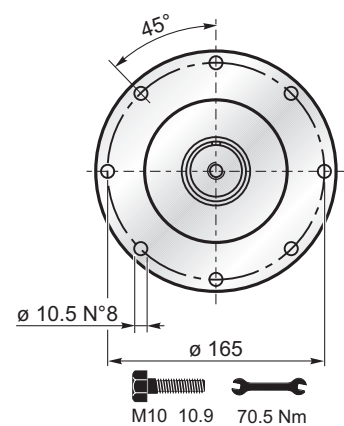
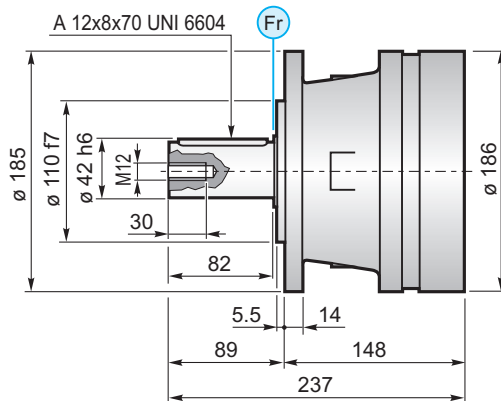
MC



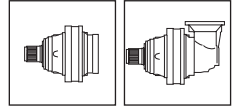
PS



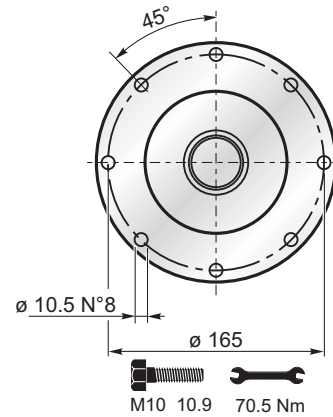
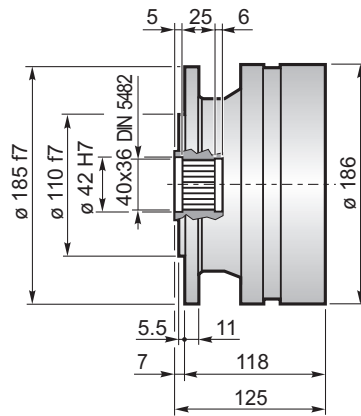
PC



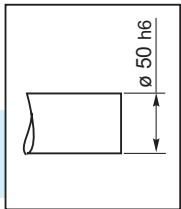
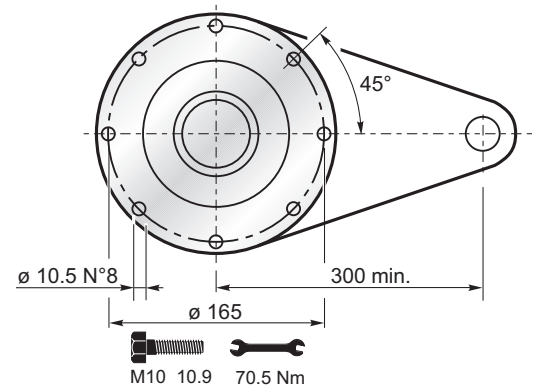
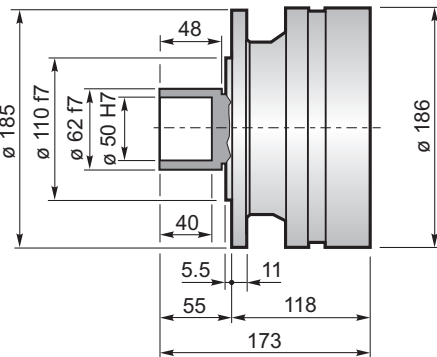
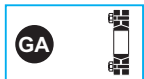
PG 160



F



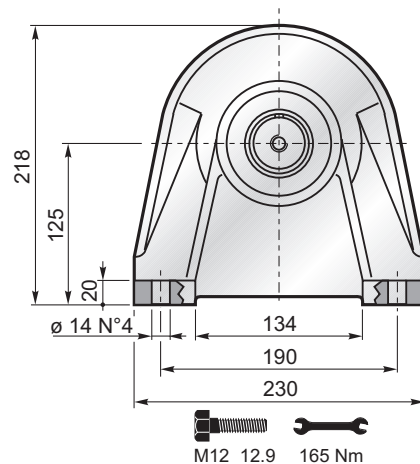
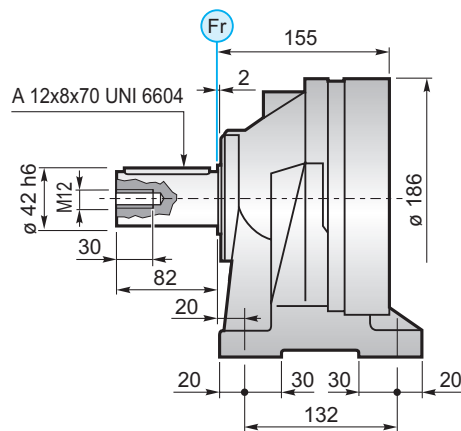
FS



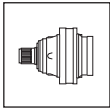
$M_{max} = 2.2 \text{ kNm}$

La coppia massima indicata è valida solo con calettatori forniti da SOM
 The maximum torque indicated is valid only with shrink discs supplied by SOM
 Le couple maximal indiqué n'est valable qu'avec les frettes de serrage fournis par SOM
 Das dargestellte, maximale Drehmoment gilt nur mit von SOM gelieferter Schrumpfscheibe

CPC



FL YZ BS FF KB GA → 56



PG 160

	PG		...MS			
	A	B	RA	RB	EF	EDF
	118	180	•			•
PG 161	118	180	•			•
PG 162	166	228	•			•
PG 163	214	276	•			•
PG 164	262	324	•			•

	PG		...MC			
	A	B	RA	RB	EF	EDF
	118	207	•			•
PG 161	118	207	•			•
PG 162	166	255	•			•
PG 163	214	303	•			•
PG 164	262	351	•			•

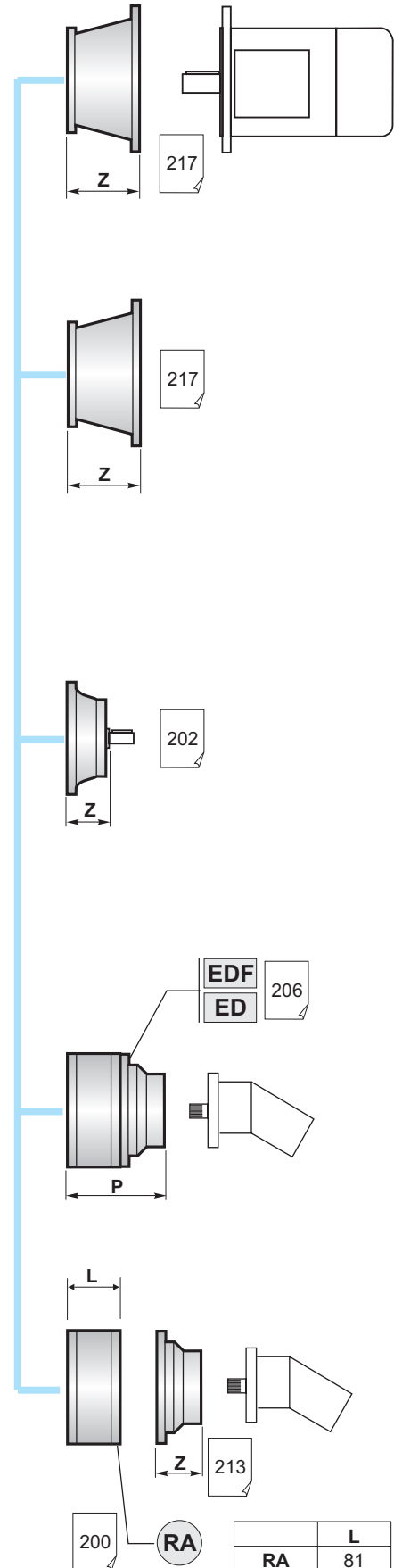
	PG		...PS			
	A	B	RA	RB	EF	EDF
	148	210	•			•
PG 161	148	210	•			•
PG 162	196	258	•			•
PG 163	244	306	•			•
PG 164	292	354	•			•

	PG		...PC			
	A	B	RA	RB	EF	EDF
	148	237	•			•
PG 161	148	237	•			•
PG 162	196	285	•			•
PG 163	244	333	•			•
PG 164	292	381	•			•

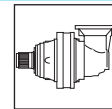
	PG		...F			
	A	B	RA	RB	EF	EDF
	118	125	•			•
PG 161	118	125	•			•
PG 162	166	173	•			•
PG 163	214	221	•			•
PG 164	262	269	•			•

	PG		...FS			
	A	B	RA	RB	EF	EDF
	118	173	•			•
PG 161	118	173	•			•
PG 162	166	221	•			•
PG 163	214	269	•			•
PG 164	262	317	•			•

	PG		...CPC			
	A	B	RA	RB	EF	EDF
	148	237	•			•
PG 161	148	237	•			•
PG 162	196	285	•			•
PG 163	244	333	•			•
PG 164	292	381	•			•



PG 160



	PGA ...MS				
	A	B	RA	RB	EF
PGA 162	193	159	•		•
PGA 163	241	159	•		•
PGA 164	289	159	•		•

	PGA ...MC				
	A	B	RA	RB	EF
PGA 162	193	159	•		•
PGA 163	241	159	•		•
PGA 164	289	159	•		•

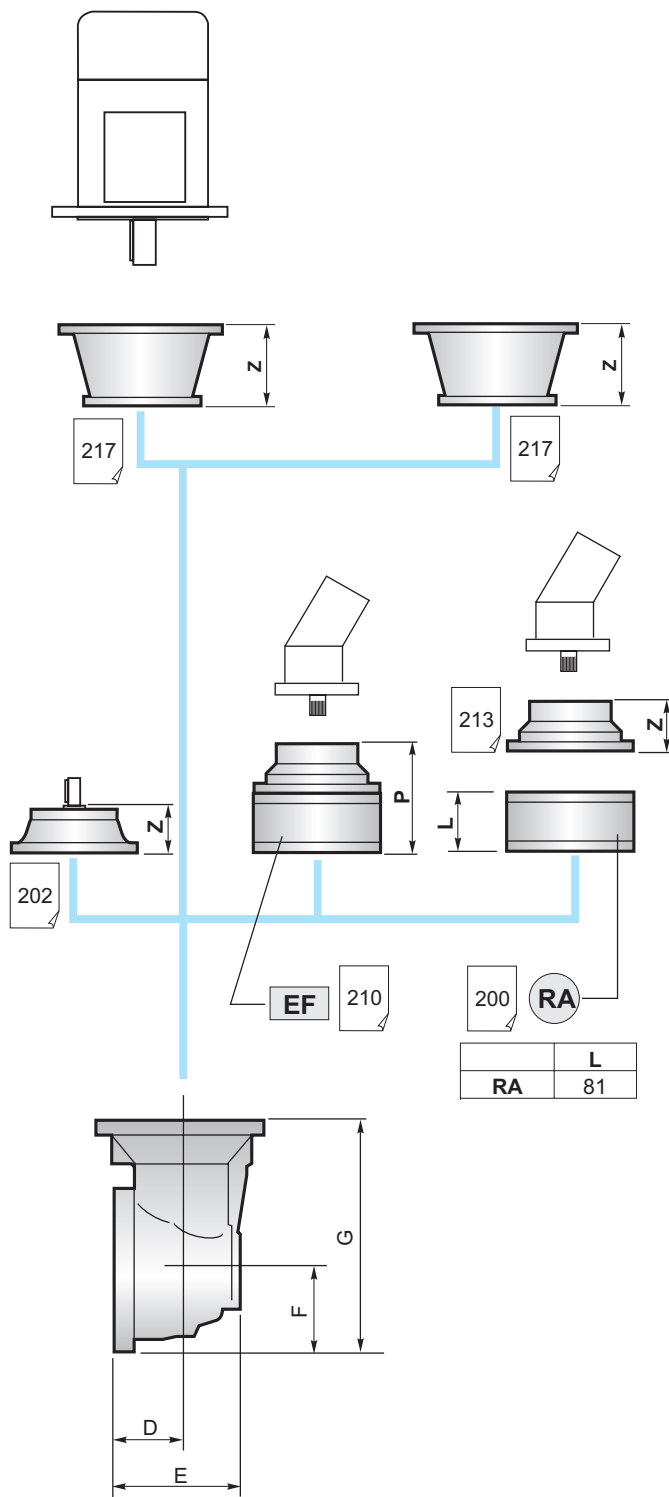
	PGA ...PS				
	A	B	RA	RB	EF
PGA 162	223	159	•		•
PGA 163	271	159	•		•
PGA 164	319	159	•		•

	PGA ...PC				
	A	B	RA	RB	EF
PGA 162	223	159	•		•
PGA 163	271	159	•		•
PGA 164	319	159	•		•

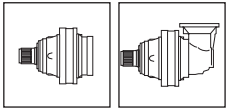
	PGA ...F				
	A	B	RA	RB	EF
PGA 162	193	159	•		•
PGA 163	241	159	•		•
PGA 164	289	159	•		•

	PGA ...FS				
	A	B	RA	RB	EF
PGA 162	193	159	•		•
PGA 163	241	159	•		•
PGA 164	289	159	•		•

	PGA ...CPC				
	A	B	RA	RB	EF
PGA 162	230	159	•		•
PGA 163	278	159	•		•
PGA 164	326	159	•		•



	D	E	F	G
PGA 162	75	141.5	93	252
PGA 163	75	141.5	93	252
PGA 164	75	141.5	93	252



PG 160

YZ Pignoni / Pinion Pignon / Ritzel



A

B

	Versione Output type Version Abtriebs- version	M	Z	XM	A	B	C	D	E	F	G	K	Materiale Material Matière Material	Codice Code Code Bestell - Nr.
A	M.. - P..	1.9	20	0.049	65	—	6	20.5	84.5	42	42	—	38NiCrMo4	1701.200.042
	M.. - P..	5	16	2.5	55	—	6	20.5	95	42	42	—	38NiCrMo4	1701.259.042
B	M.. - P..	3.5	23	0	40	60.5	6	20.5	87.5	42	42	60	38NiCrMo4	1701.291.042

BS Boccola scanalata / Splined bushing Moyeu cannelé / Innenverzahnte Buchse



**Materiale / Material
Matière / Material**
UNI C40
SAE 1040
DIN Ck40

**Codice / Code
Code / Bestell - Nr.**
1710.100.076

FF Fondello di arresto / Stop bottom plate Bouchon de fermeture / Endscheibe



**Codice / Code
Code / Bestell - Nr.**
5701.034.000

FL Flangia / Flange Bride / Flansch



**Codice / Code
Code / Bestell - Nr.**
1710.102.025

KB Barra scanalata / Splined rod Arbre cannelé / Außenverzahnte Welle



**Materiale / Material
Matière / Material** UNI 39NiCrMo3
bonificato
hardened and tempered
bonifié
vergulst

**Codice / Code
Code / Bestell - Nr.**
1703.179.042

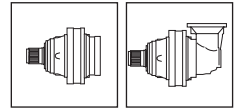
GA Giunto di attrito / Shrink disc Frette de serrage / Schrumpfscheibe



**Coppia max.
Max. torque
Couple max.
Max. Drehmoment**
2.2 kNm

**Codice / Code
Code / Bestell - Nr.**
9015.062.000

PG 160



CARICHI RADIALI (Fr)

Nei diagrammi seguenti sono riportati i carichi radiali e i coefficienti K per rapportarli al valore $n_2 \times h$ desiderato.

RADIAL LOADS (Fr)

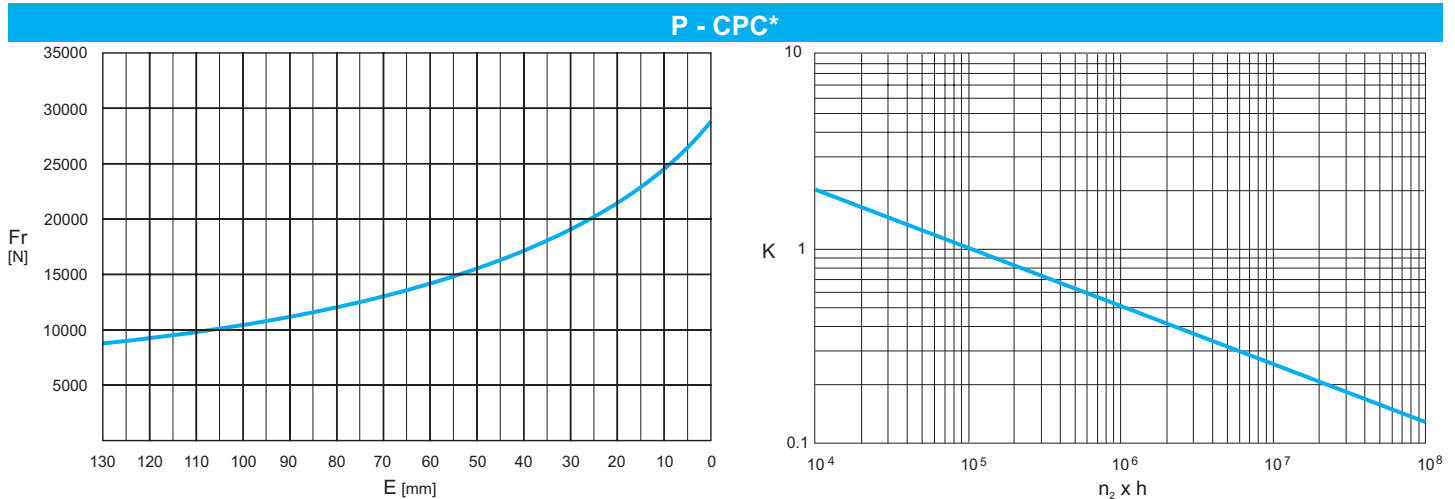
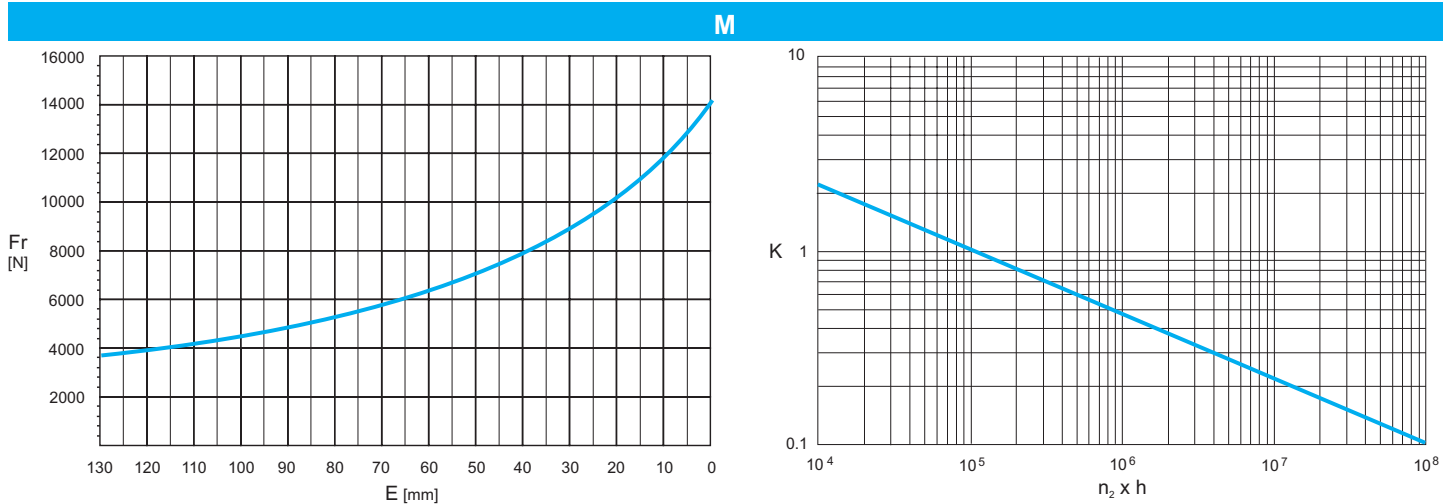
The following curves show the radial loads and the K factors to obtain the required $n_2 \times h$ value.

CHARGES RADIALES (Fr)

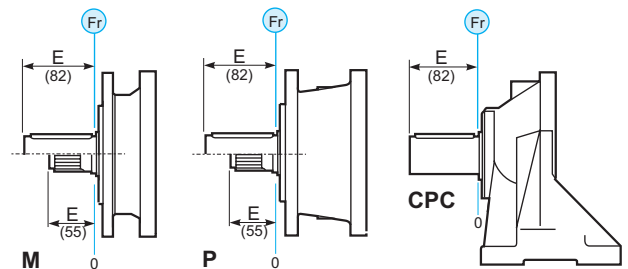
Dans les diagrammes suivants sont indiqués les charges radiales et les facteurs K de façon à obtenir la valeur $n_2 \times h$ désirée.

RADIALLAST (Fr)

In den nachstehenden Diagrammen ist die Radiallast und der Koeffizient K dargestellt und kann mit dem gewünschten Wert $n_2 \times h$ verglichen werden.



	$n \times h$				
	10^5	10^4	10^6	10^7	10^8
M - P	Fr		$Fr \cdot K$		
*CPC	$Fr \cdot 0.75$		$Fr \cdot K \cdot 0.75$		



CARICHI ASSIALI (Fa)

I valori dei carichi assiali indicati in tabella sono riferiti alle versioni e alla direzione di applicazione del carico.

AXIAL LOADS (Fa)

The values of the axial loads in the table refer to the output versions and load direction of application.

CHARGES AXIALES (Fa)

Les valeurs des charges axiales indiquées dans le tableau se réfèrent aux versions et à la direction d'application de la charge.

AXIALLAST (Fa)

Die dargestellten Werte der Axiallast basieren auf der Version und der applizierten Lastrichtung.

Fa [N]	M	P - CPC	← →
		16000	

